



# US 93 Whitefish - West

---



Public Open House  
November 17, 2009

Montana Department of Transportation





# Why Are We Here Tonight?

- ◆ Project Update
- ◆ Project Overview
- ◆ Explain Right-of-way Acquisition Process
- ◆ Questions & Answers
- ◆ View Design Plans



# Project History



- ◆ 1994 – US Highway 93 Somers to Whitefish Final Environmental Impact Statement (FEIS) and Record of Decision (ROD) completed.



# Project History



- ◆ 2005 – Preliminary Design of Whitefish West segment began.
- ◆ 2005-2007
  - 2 public meetings
  - 10 Citizens Working Group meetings
  - 1 presentation to City Council.



# Project History



## January 2008 – City Council Resolution

- ◆ Preserve the unique community character of Whitefish and seek to eliminate or minimize impacts from the reconstruction and future use of US Highway 93.
- ◆ Enable timely completion of the US 93 Whitefish West project by reducing costs for right-of-way acquisition and construction activities.



# Project History



February 2008 – Decision Team Meeting

- ◆ Mike Jenson, Whitefish Mayor
- ◆ Martin McGrew, Whitefish City Council
- ◆ Dwane Kailey, MDT
- ◆ Craig Genzlinger, FHWA



# Project History



- ◆ October 2008 – FEIS Re-Evaluation of Whitefish West segment signed.



# Project Status



- ◆ Feb-April 2009 – 2 Additional Citizens Working Group Meetings
- ◆ September 2009 – Plan-In-Hand Review
- ◆ October 2009 – Value Analysis



# What's Next



- ◆ Funding remains uncertain...
- ◆ Project Phasing
  - Segment 1 – Lupfer to Karrow
  - Segment 2 – Karrow to West of Mountainside
  - Segment 3 – West of Mountainside to MP 133
- ◆ Right-of-way Acquisition – Spring 2010



# Project Overview





# Purpose & Need

“...reduce congestion on the existing facility, provide for planned growth and development, improve safety, provide for improved intermodal facility connections, and provide for enhanced scenic values.”

- 1994 FEIS

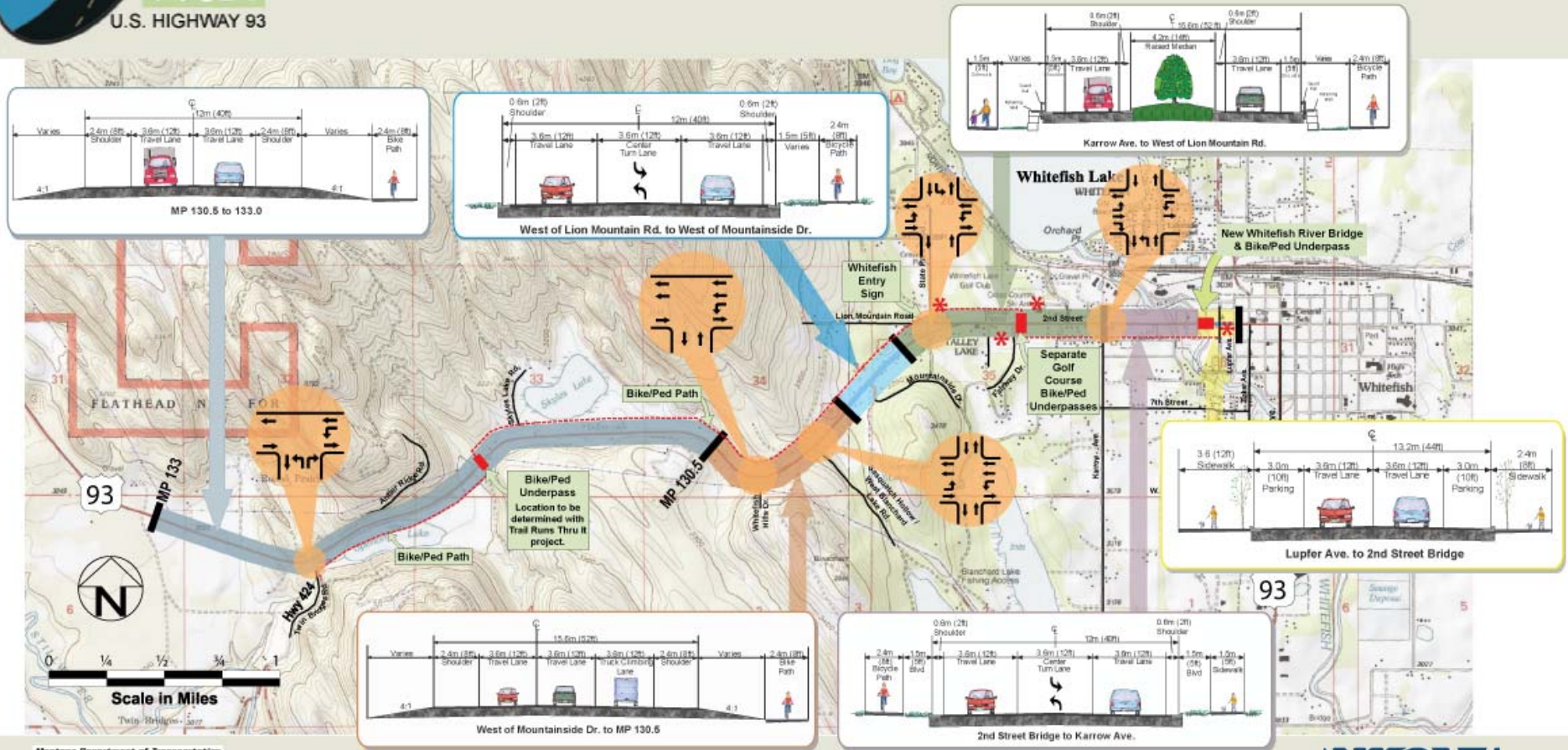


# Purpose & Need

- ◆ Whitefish West Project
  - Originally constructed in 1936
  - Significant increases in traffic volumes
  - The existing facility lacks:
    - Adequate stopping sight distance
    - Shoulders
    - Turn lanes
    - Lighting
    - Drainage
    - Bicycle/pedestrian facilities.
  - Higher than average crash rate and severity rate



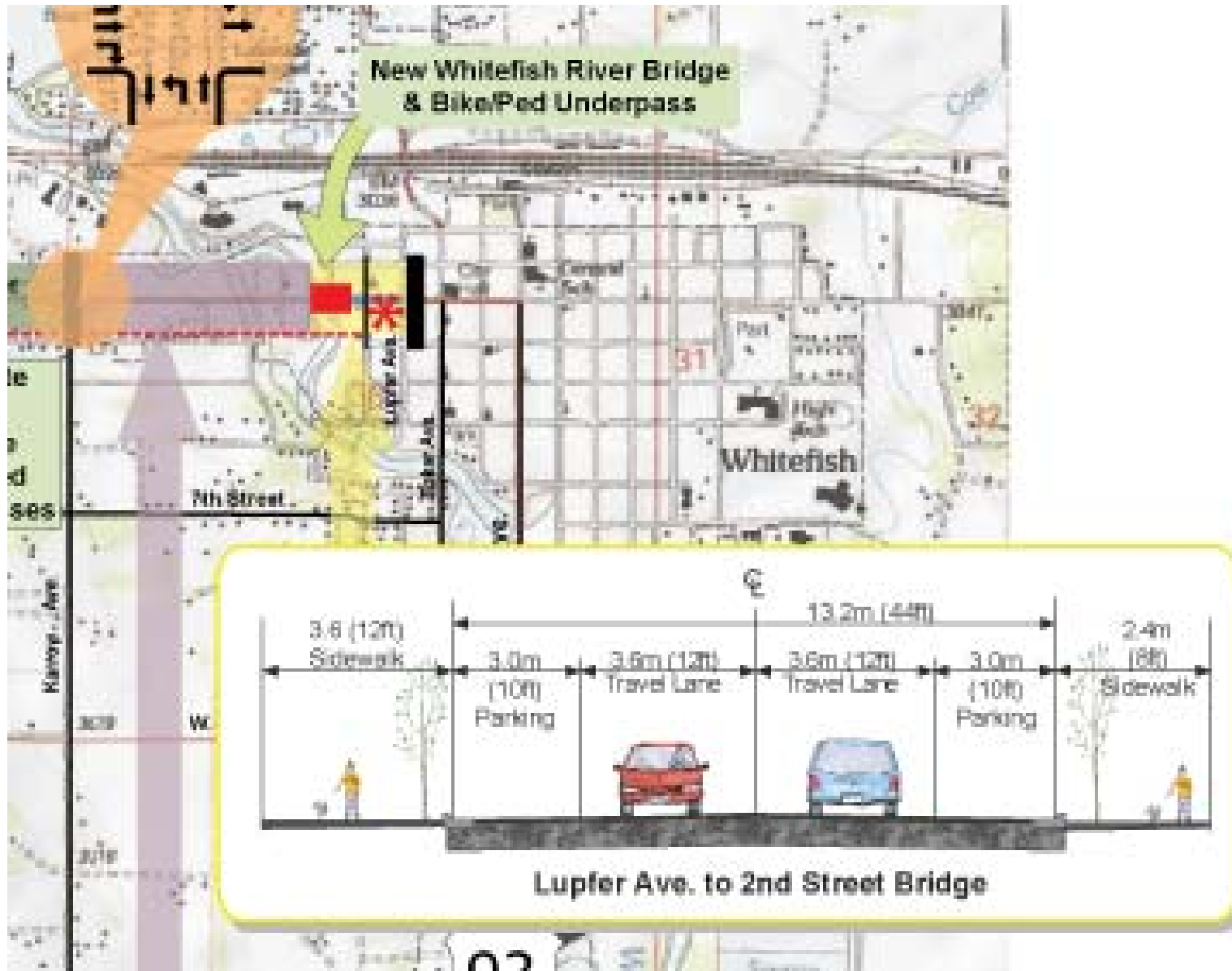
# Preliminary Design Overview



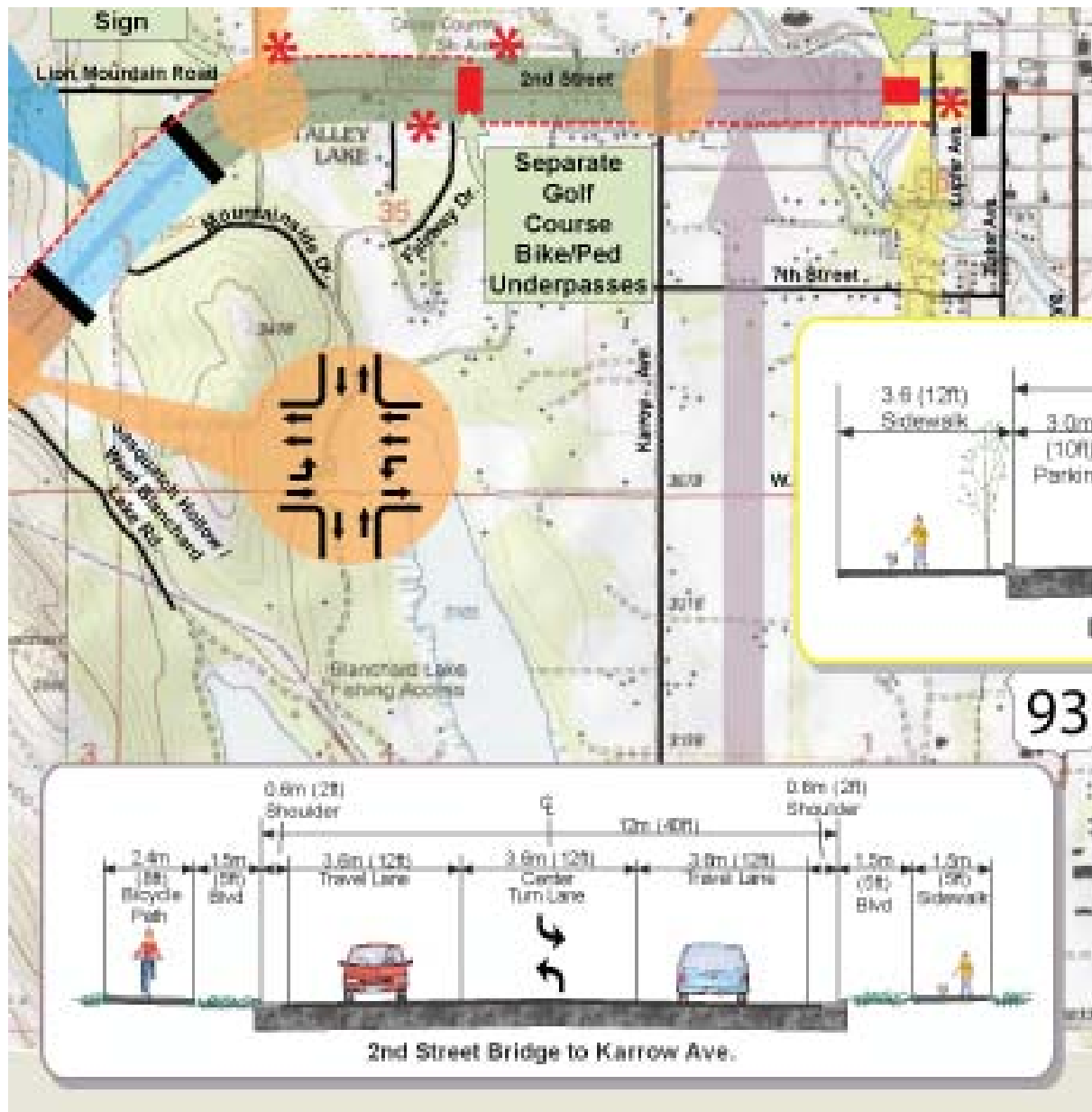
\* Future Bus Stop Locations



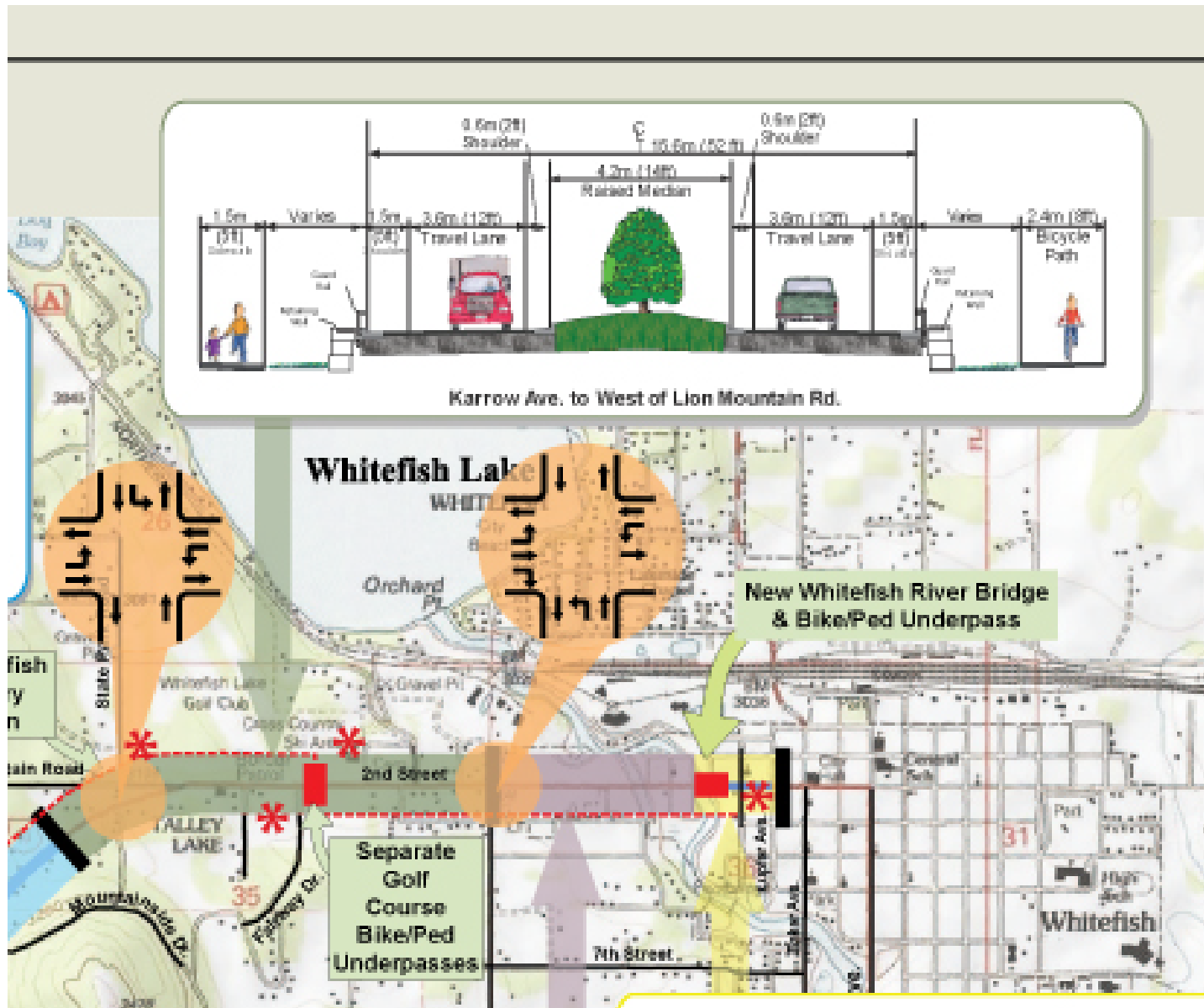
# Project Elements



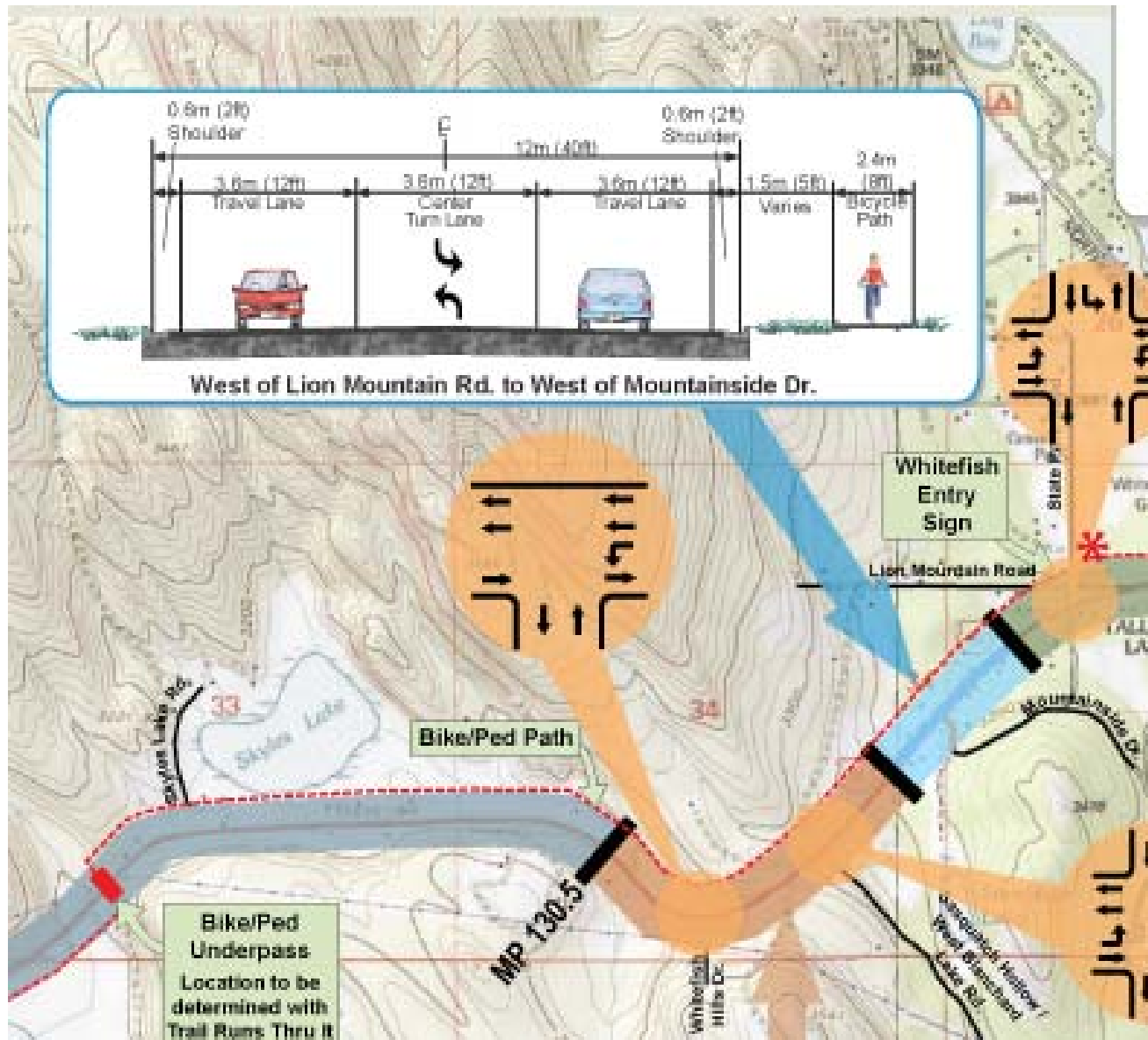
# Project Elements



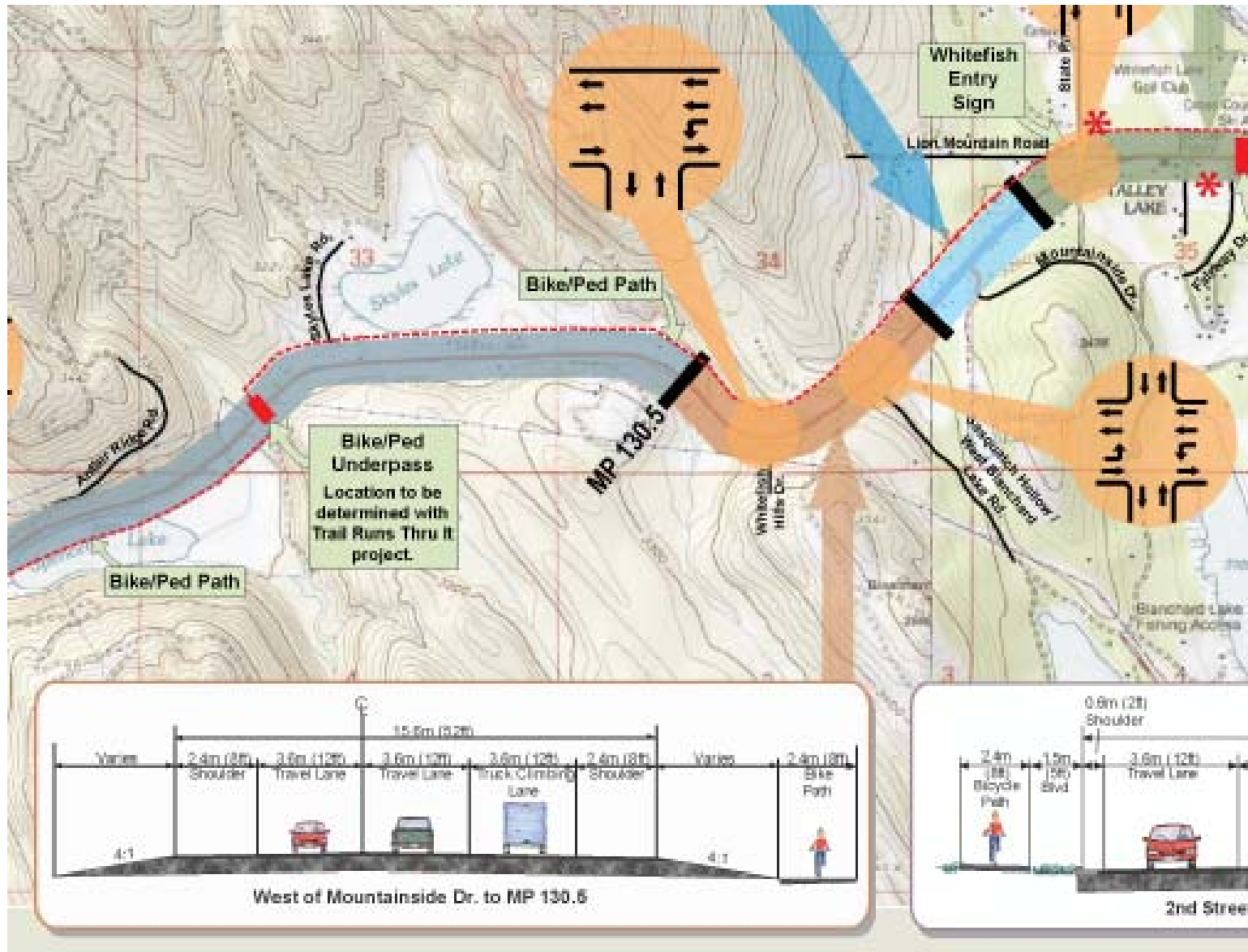
# Project Elements



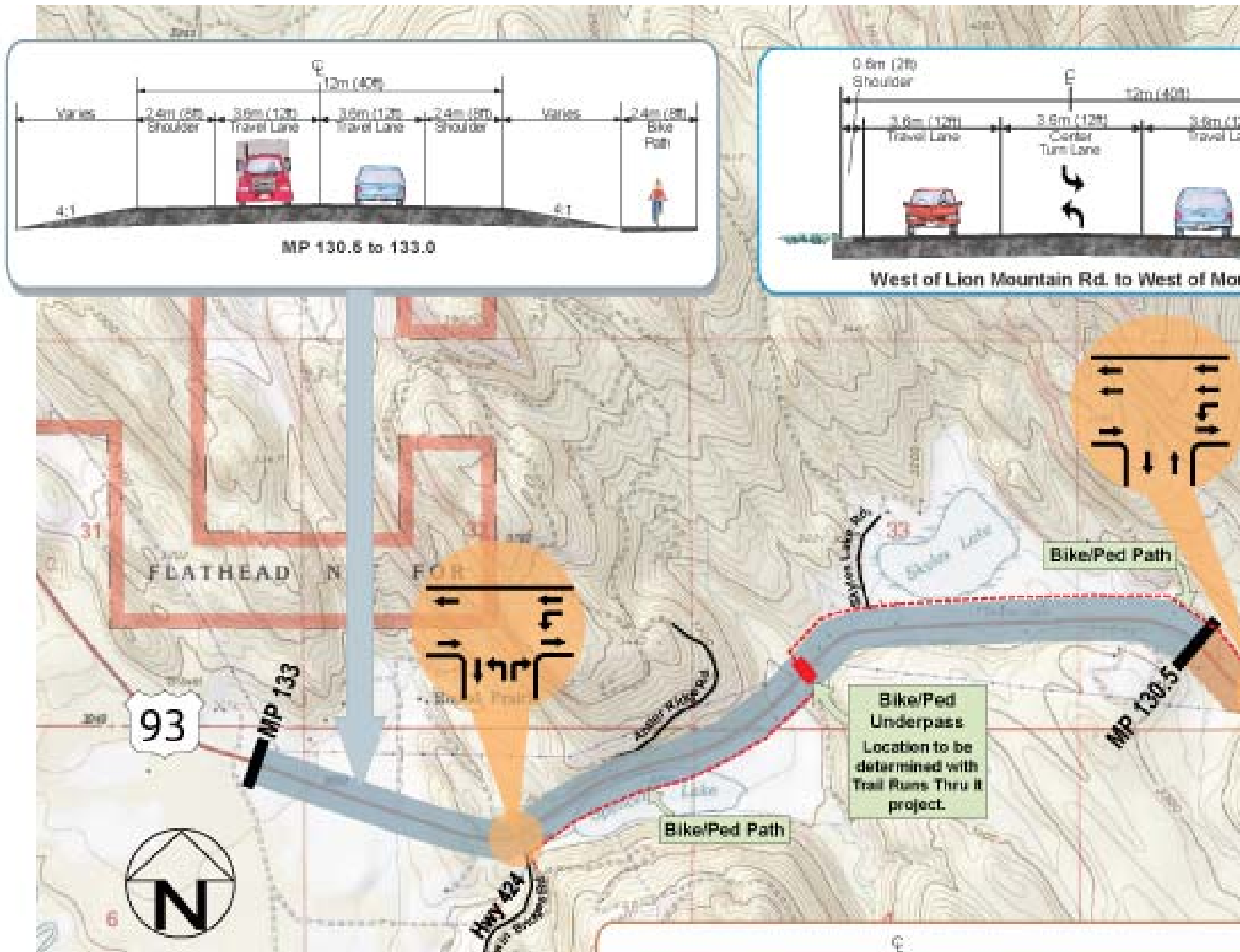
# Project Elements



# Project Elements



# Project Elements



# Project Elements



# What's Involved?

- ◆ bridge replacement
- ◆ clearing, grubbing, rock blasting, and grading
- ◆ storm drainage
- ◆ curb, gutter, and sidewalks
- ◆ bike/pedestrian path
- ◆ replacement of the golf course underpass
- ◆ new bike/pedestrian underpass at golf course
- ◆ new bike/pedestrian underpass near Skyles Lake Lane



# What's Involved?

- ◆ asphalt paving
- ◆ signing and striping
- ◆ landscaping and irrigation
- ◆ entry sign at State Park Road
- ◆ raised medians
- ◆ lighting
- ◆ retaining wall, guardrail, fencing, and other miscellaneous items
- ◆ right-of-way acquisition and utility relocation
- ◆ limited access control



# Bridge Replacement

- ◆ New concrete girder bridge
- ◆ Sidewalks on both sides
- ◆ Provision for a future bike/pedestrian underpass
- ◆ Decorative bridge railing





# Sidewalks & Paths

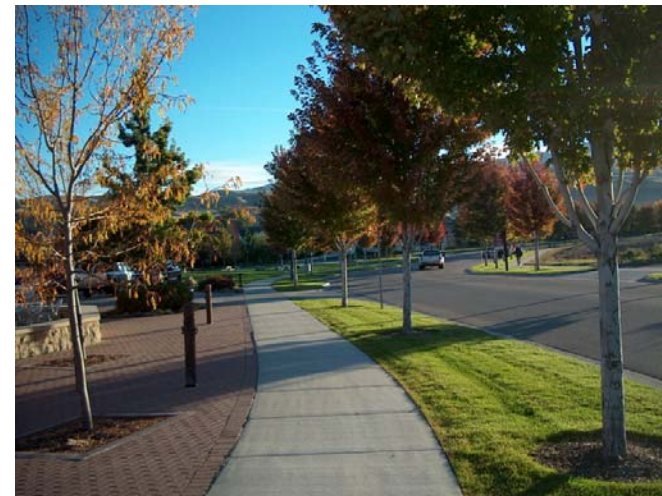
- ◆ Boulevard sidewalks
- ◆ Bike/Ped Path
- ◆ Underpasses
  - Bridge
  - Golf course, including separate underpass for golf traffic
  - Skyles Lake





# Landscaping & Irrigation

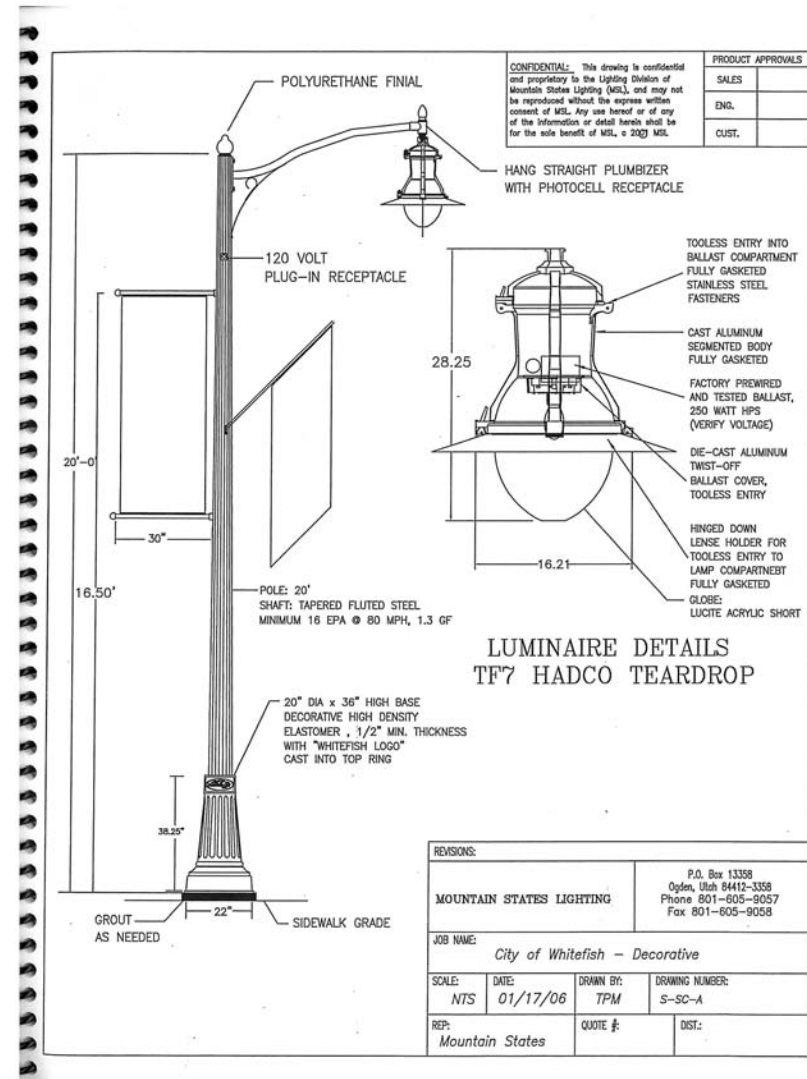
- ◆ Median Landscaping
- ◆ Street Trees
- ◆ Entry Sign at State Park Rd





- ◆ Whitefish Standard Decorative Lighting
- ◆ Dark Skies Friendly Fixtures
  - Lupfer to River Commercial Level
  - River to Karrow Intermediate Level
  - Karrow to State Park Rd Residential Level

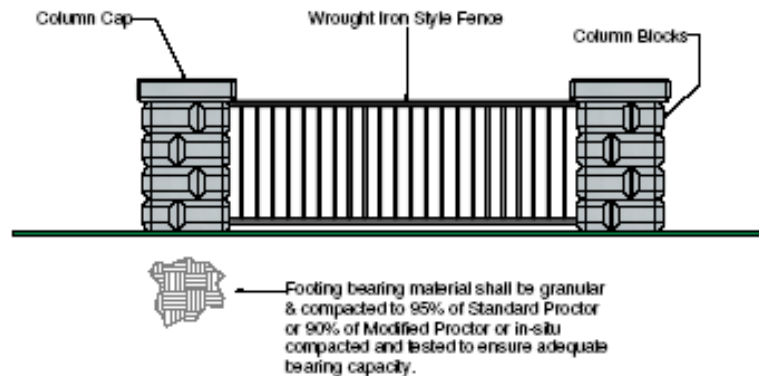
# Lighting





# Retaining Walls

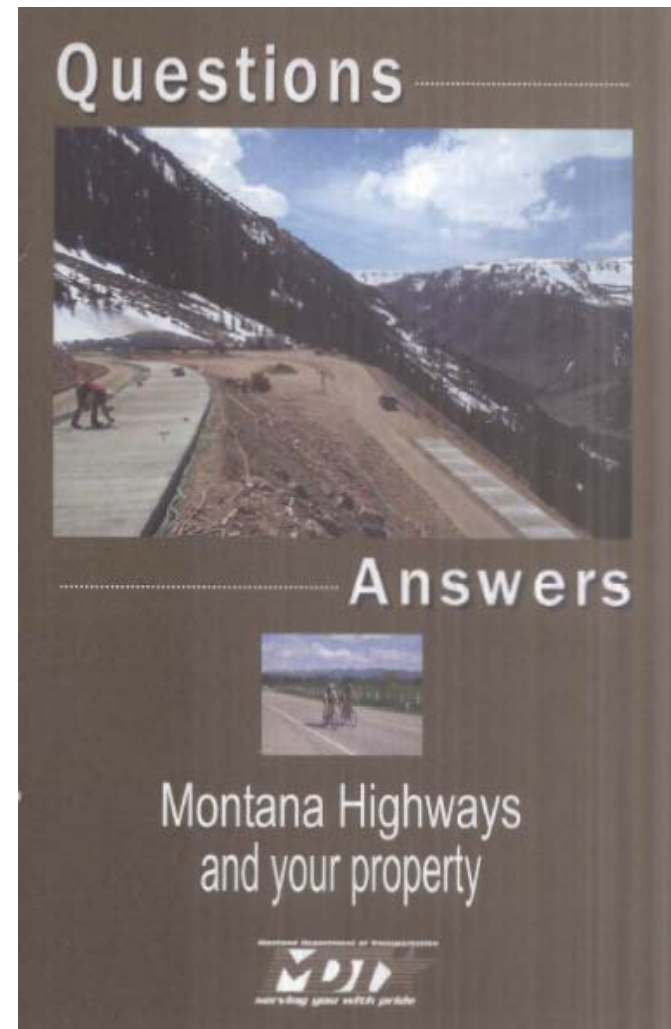
- ◆ Modular Block
- ◆ Hand Rails
- ◆ Concrete Staining





# Right-of-way Acquisition

- ◆ Landowner Meeting
- ◆ Uniform Act
- ◆ Appraisals
  - Before & After Method
  - Fair Market Value
- ◆ Negotiations
  - Written Offer
- ◆ Fee Right-of-way
- ◆ Easements
- ◆ Construction Permits
- ◆ Access Control





# Questions & Answers

