



US 93 Whitefish - West



Citizens
Working Group
Meeting
February 2009





Process Update



- ◆ NOV 2007 – CWG Meeting
- ◆ NOV 2007 – Council Meeting
- ◆ JAN 2008 – Council Resolution
- ◆ FEB 2008 – Decision Team Meeting
- ◆ OCT 2008 – FEIS Re-Evaluation Completed
- ◆ Spring 2009 – “Plan-In-Hand” Review



JAN 2008 - City Council Resolution

- ◆ Preserve the unique community character of Whitefish and seek to eliminate or minimize impacts from the reconstruction and future use of US Highway 93.
- ◆ Enable timely completion of the US 93 Whitefish West project by reducing costs for right-of-way acquisition and construction activities.



FEB 2008 – Decision Team Meeting

- ◆ Mike Jenson
Whitefish Mayor
- ◆ Martin McGrew
Whitefish City Council
- ◆ Gary Hall
Flathead County (not present)
- ◆ Dwane Kailey
MDT
- ◆ Craig Genzlinger
FHWA

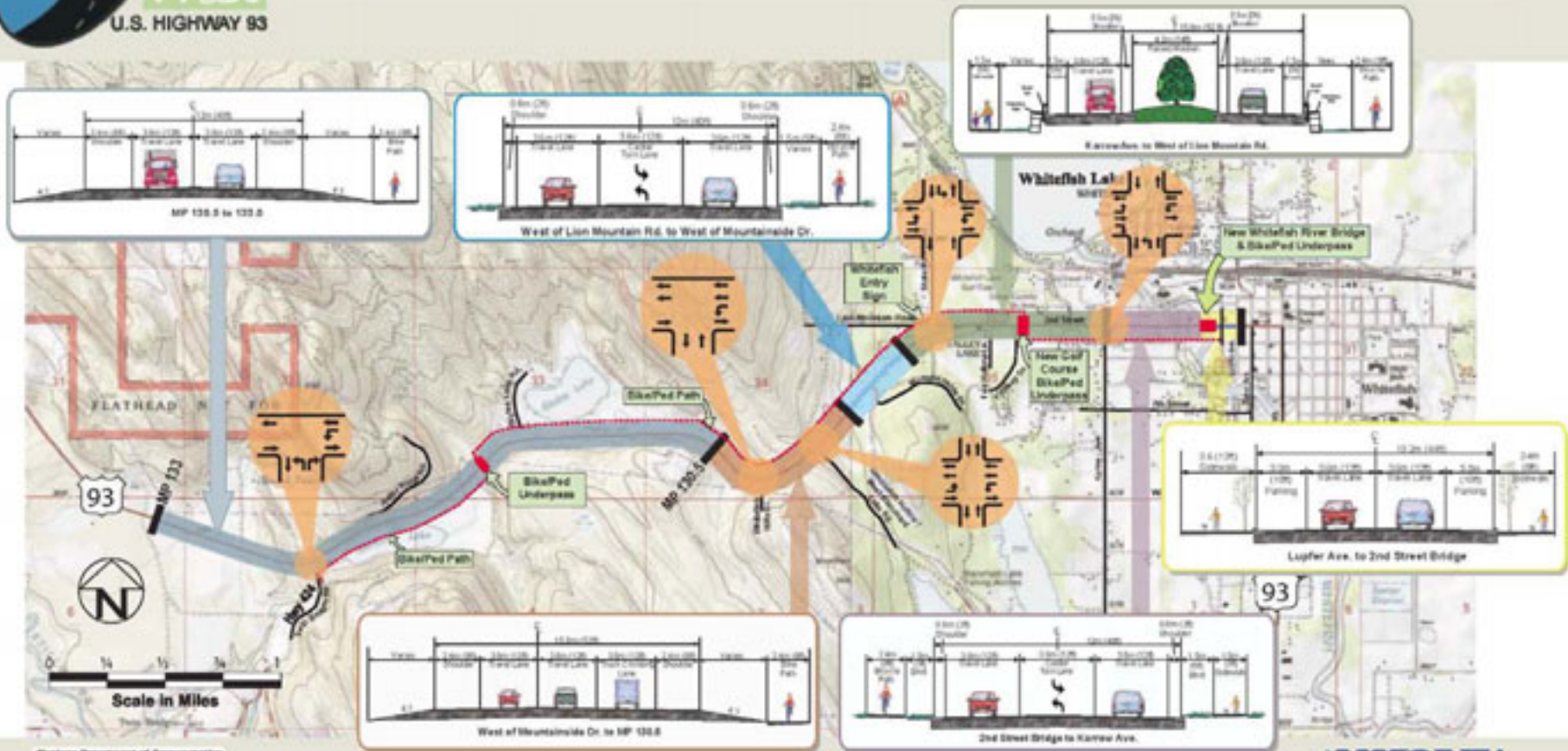


FEB 2008 – Decision Team Meeting

Specific Design Decisions & Agreements

- ◆ Preserve Downtown Character and Minimize Impact to Businesses
 - Eliminate center turn lane and preserve parking east of bridge
 - Construct a 2-lane bridge with wide pedestrian walkways
- ◆ Promote Lower Speeds & Minimize Right-of-Way Acquisition
 - Reduce center turn lane from 14' to 12'
 - Increase striping width from 4" to 6" and include a shoulder stripe
 - Provide boulevard trees
 - Reduce shoulder widths from 9' to 8'
 - Steepen slopes from 6:1 to 4:1
 - Consider guardrail on case by case basis
 - Eliminate eastbound passing lane and shorten westbound passing lane
- ◆ Reduce Costs, Right-of-Way Acquisition, and Visual Impacts (rural area)

FIGURE 2: CURRENT PROPOSED ACTION





Recommendations to be Considered in Final Design

- ◆ Minimize impacts to adjacent homes & businesses
- ◆ Construct project in multiple phases
- ◆ Provide two tunnels at the golf course
- ◆ Provide lighting compliant with City Standards
- ◆ Manage storm water runoff utilizing low impact design
- ◆ Investigate feasibility of burying overhead utilities
- ◆ Improve access at the rest area and provide an RV dump



Project Costs

- ◆ Design changes reduced project cost by approximately \$13.3 million!
 - \$1.4 M Construction
 - \$11.9 M Right-of-way

However, this is still an expensive project!



Project Costs

Lupfer to Karrow	\$7.5 million
Karrow to Mountainside	\$8.4 million
<u>Mountainside to MP 133</u>	<u>\$9.9 million</u>
Total Construction	\$25.8 million
Right-of-way	\$20.6 million
Utility Relocation	\$3.0 million
Total Project Cost	\$49.4 million



What's Included?

- ◆ Standard Highway Lighting
- ◆ Modular Block Retaining Walls
- ◆ Standard Metal Handrails
- ◆ Landscaping & Irrigation
- ◆ Median Landscaping
- ◆ Entry Sign
- ◆ Patterned Concrete Median Cap
- ◆ Underpasses at Bridge, Golf Course, Skyles Lake
- ◆ Standard concrete girder bridge with barrier rail & hand rail
- ◆ Boulevard sidewalks with street trees
- ◆ Bike Path



Standard Highway Lighting





Modular Block Retaining Walls





Modular Block Retaining Walls





Standard Metal Handrails





Standard Metal Handrails





Standard Metal Handrails



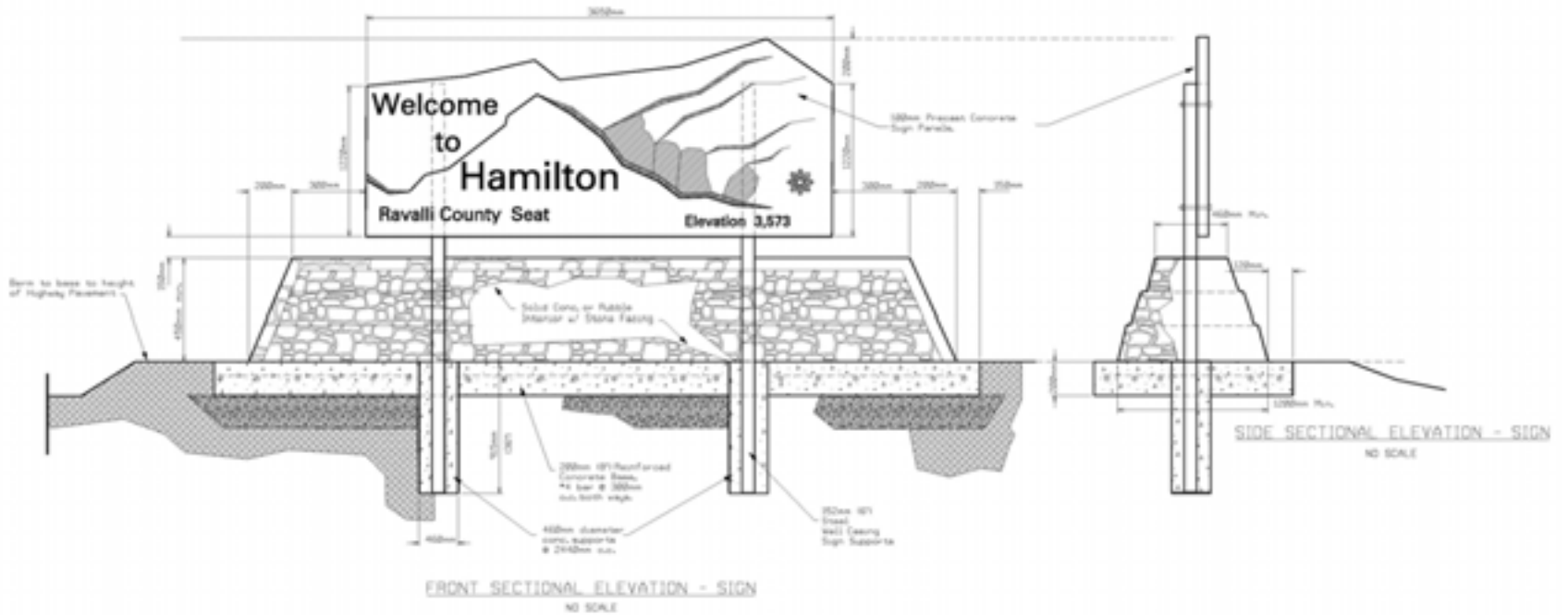


Landscaping & Irrigation

- ◆ Street Trees & Boulevards
- ◆ Medians
- ◆ State Park Area
- ◆ Restoration & Replacement of Existing Landscaping
- ◆ Seeding & Permanent Erosion Control



Entry Sign





Median Landscaping





Median Landscaping





Median Landscaping





Patterned Concrete Median Cap





Bridge Underpass





Golf Course Underpass - Existing





Underpass Examples





Underpass Examples





Underpass Examples





Underpass Examples





Underpass Examples





Underpass Examples





Concrete Girder Bridge





Concrete Girder Bridge





Standard Bridge Railings





Standard Bridge Railings





Standard Bridge Railings





Standard Bridge Railings





Boulevard Sidewalks with Street Trees





Boulevard Sidewalks with Street Trees





Bike Path





What's not included without additional funding?

- ◆ Decorative Lighting
- ◆ Natural Stone Retaining Walls
- ◆ Decorative Hand Rails
- ◆ Dual Underpasses at Golf Course
- ◆ RV Dump Station at Rest Area
- ◆ Decorative Bridge Rail
- ◆ Planters/Benches/Streetscape Elements

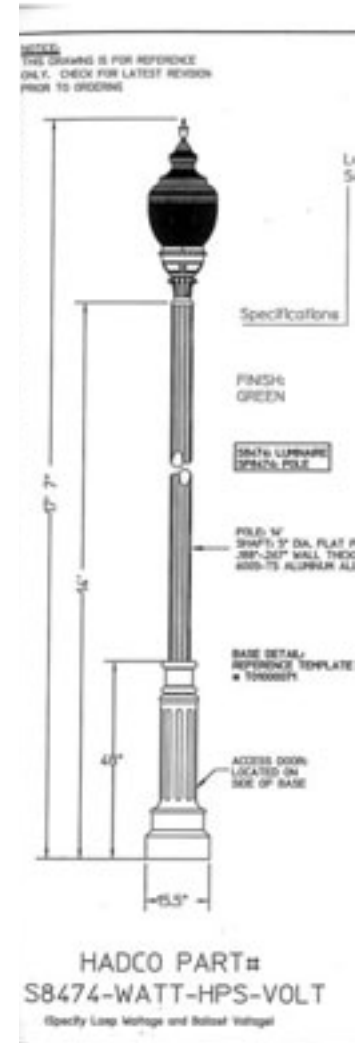
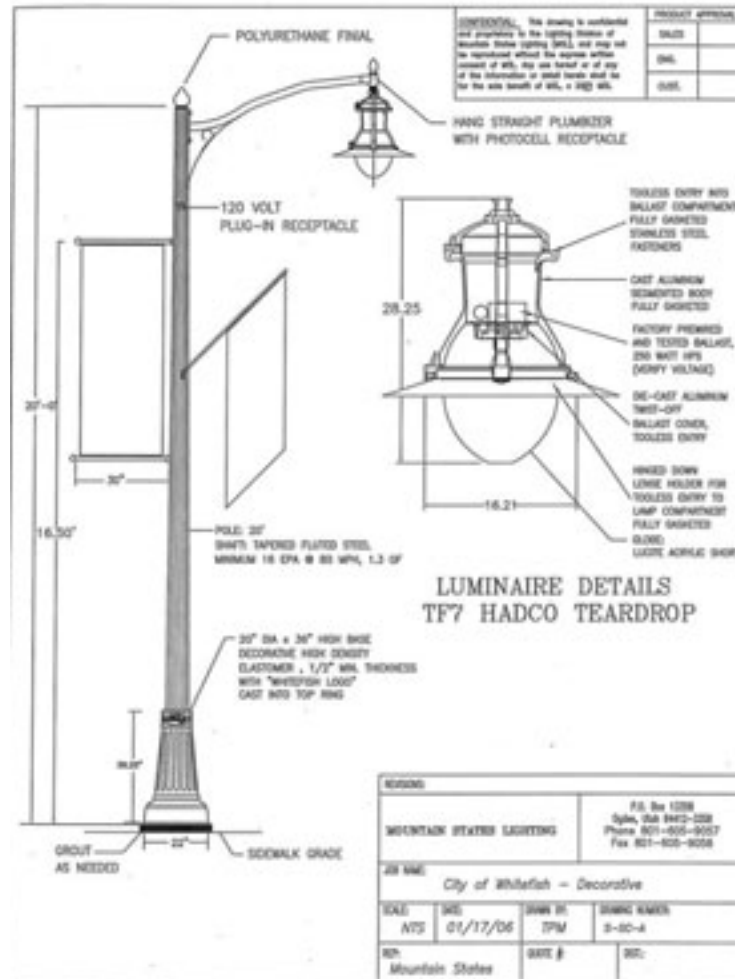
Why Not?

- ◆ Cost
- ◆ Maintenance
- ◆ Precedent



Decorative Lighting

◆ Upgrade Cost ~ \$250,000 – \$400,000





Natural Stone Retaining Walls

◆ Upgrade Cost ~ \$544,000





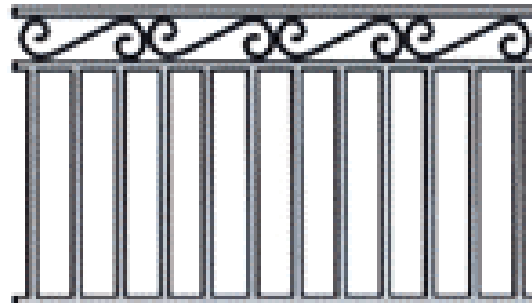
Stained Concrete Retaining Walls





Decorative Hand Rails

◆ Upgrade Cost ~ \$95,000





Decorative Bridge Rail

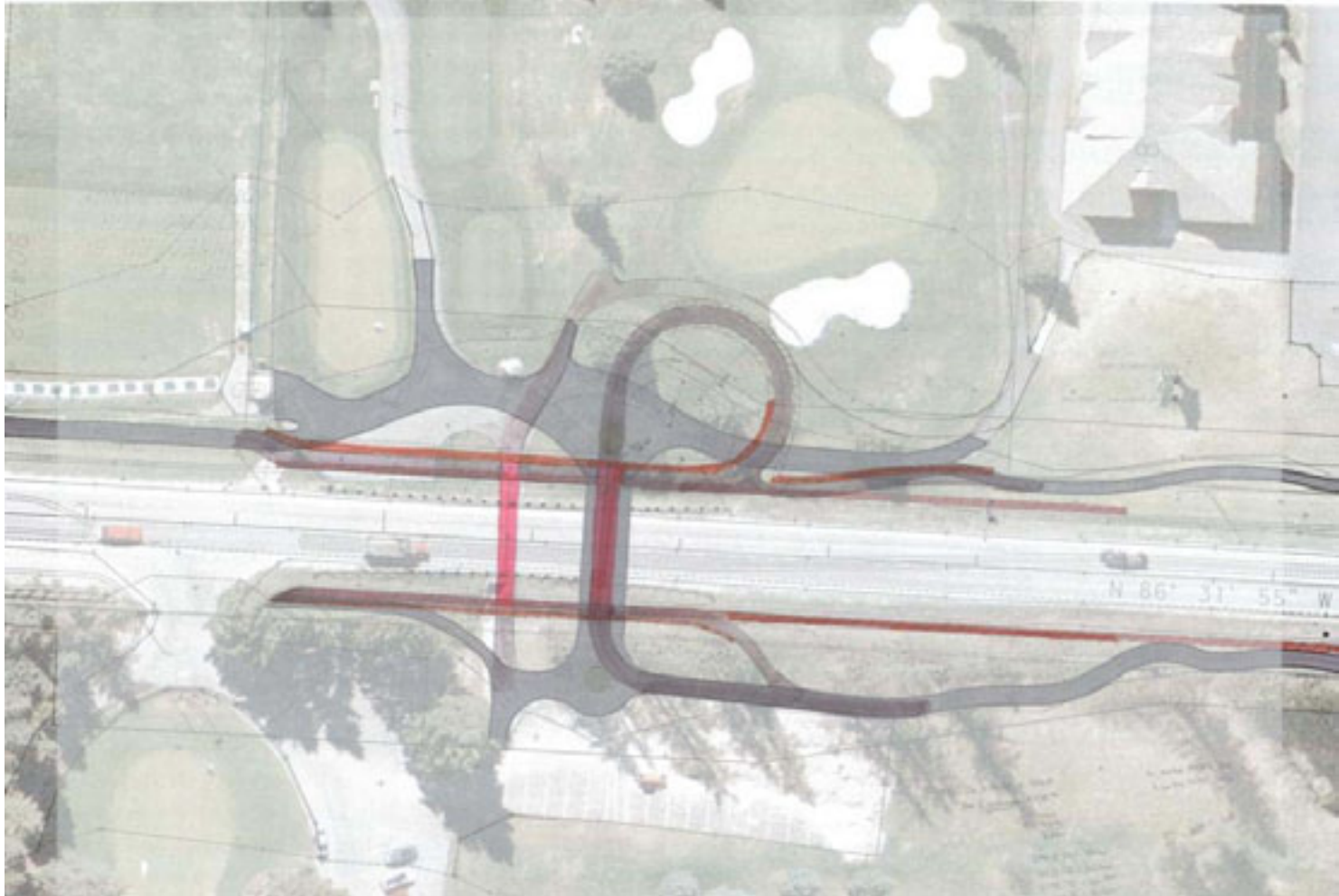
◆ Upgrade Cost ~ \$44,000





Dual Underpasses at Golf Course

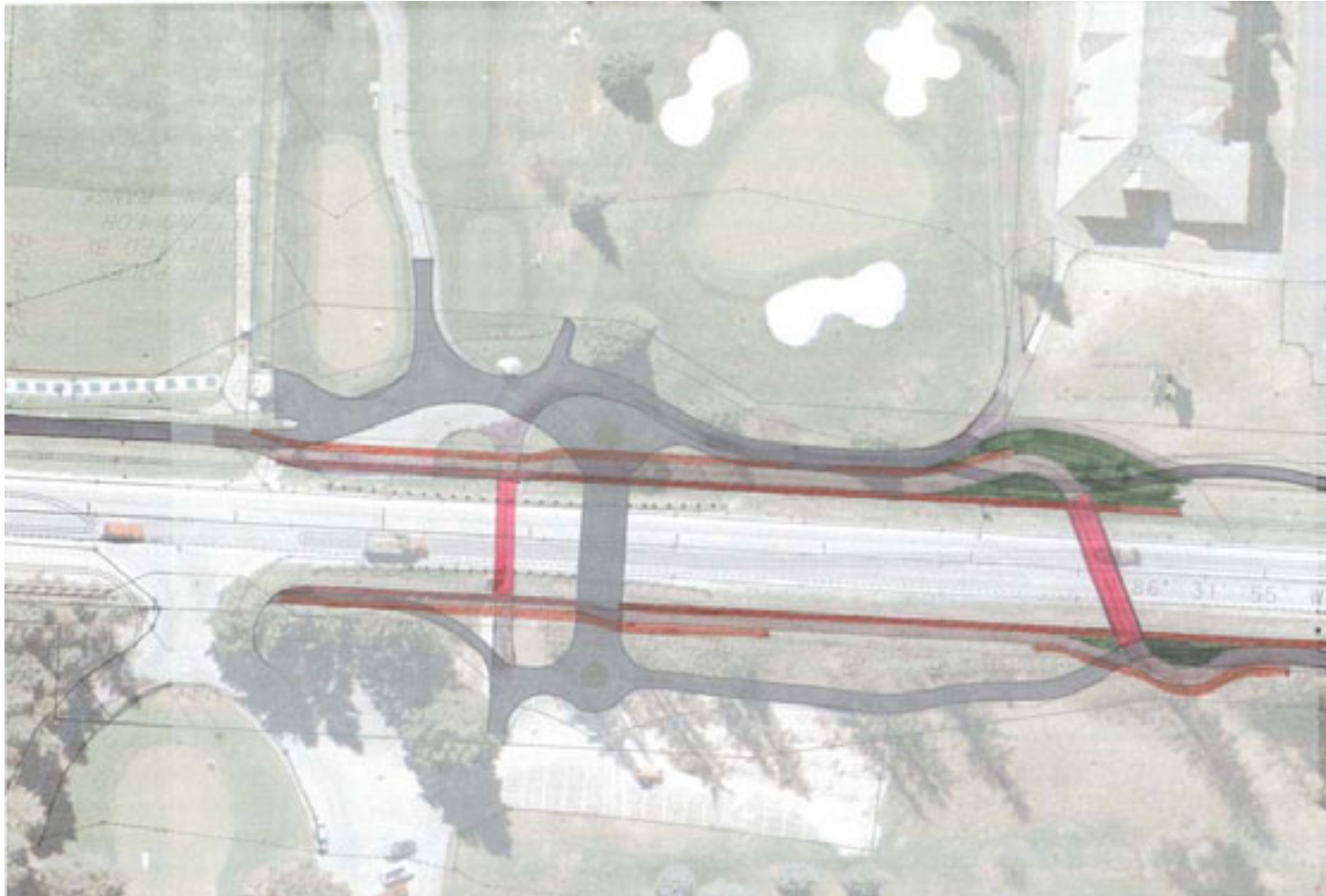
◆ Upgrade Cost ~ \$80,000 - \$120,000





Dual Underpasses at Golf Course

◆ Upgrade Cost ~ \$80,000 - \$120,000





RV Dump Station at Rest Area



Planters/Benches/Streetscape Elements

- ◆ Upgrade Cost ~
\$30,000 - \$50,000





What's Next

- ◆ Plan-In-Hand Review
March / April 2009
- ◆ Last CWG Meeting
April 23, 2009
5:30 – 8:00 PM
Whitefish Public Library
- ◆ Public Open House
Spring / Summer 2009