

Whitefish

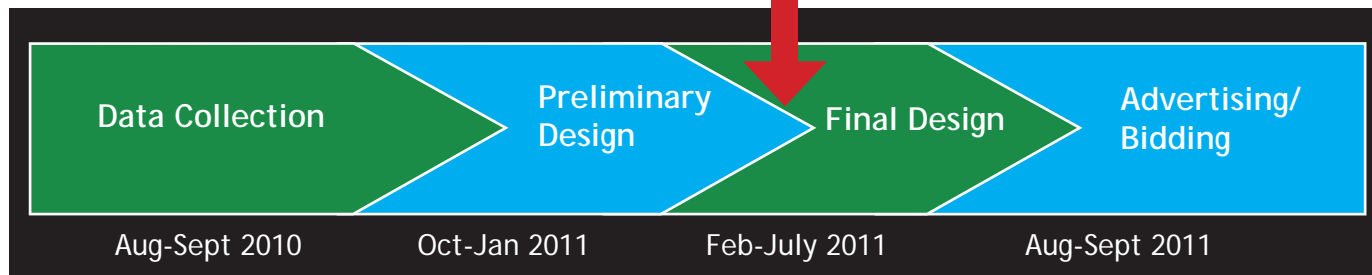
US Highway 93/2nd Street Improvement Project



Project Schedule

With the Preliminary Design phase now complete, the design team will focus on right-of-way acquisition. Appraisal and negotiations will take place over the next few months, with the goal of completing acquisition by the end March. Meanwhile, designers will work to address comments on the preliminary design received from public and review agencies.

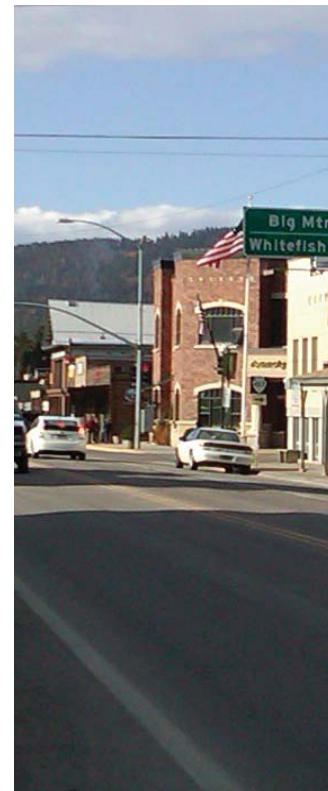
We are here



1111 East Broadway
Missoula, MT 59802

Whitefish

US Highway 93/2nd Street Improvement Project



The US Highway 93/2nd Street Improvements will reconstruct US Highway 93 (2nd Street), between Spokane and Baker Avenues. It is funded by a \$3.5 million federal Transportation Infrastructure Generating Economic Recovery (TIGER) grant.

Accomplishments to Date

✓ **Permission to Proceed**

There are important safe-guards in place to ensure that projects do not harm the natural or human environment. A significant hurdle was passed when, after carefully examining environmental documentation (called a Categorical Exclusion), the Federal Highway Administration gave the project the go-ahead.

✓ **Traffic Analysis**

To make sure that nothing is left to chance, engineers simulated traffic in downtown Whitefish, using traffic counts and state-of-the-art modeling software. This ensures that the design will meet the needs of US Highway 93 traffic and local downtown circulation.

✓ **Preliminary Design**

Preliminary design bridges the gap between conceptual design (the Master Plan) and final design (the nitty-gritty engineering). It is critical to the environmental process, right-of-way acquisition, and cost estimating. Preliminary design provides an opportunity for the public to comment, before the design is complete.

In this Issue

- Accomplishments
- What's Next?
- Public Meeting
- Project Schedule
- Preliminary Design Overview
- Contact Information

What's Next?

The next step is right-of-way acquisition and final design. Right of way acquisition is the purchase of private land on corners where widening is necessary. Final design will incorporate public and agency comments, where appropriate and feasible, and prepare detailed plans for construction.

Public Meeting

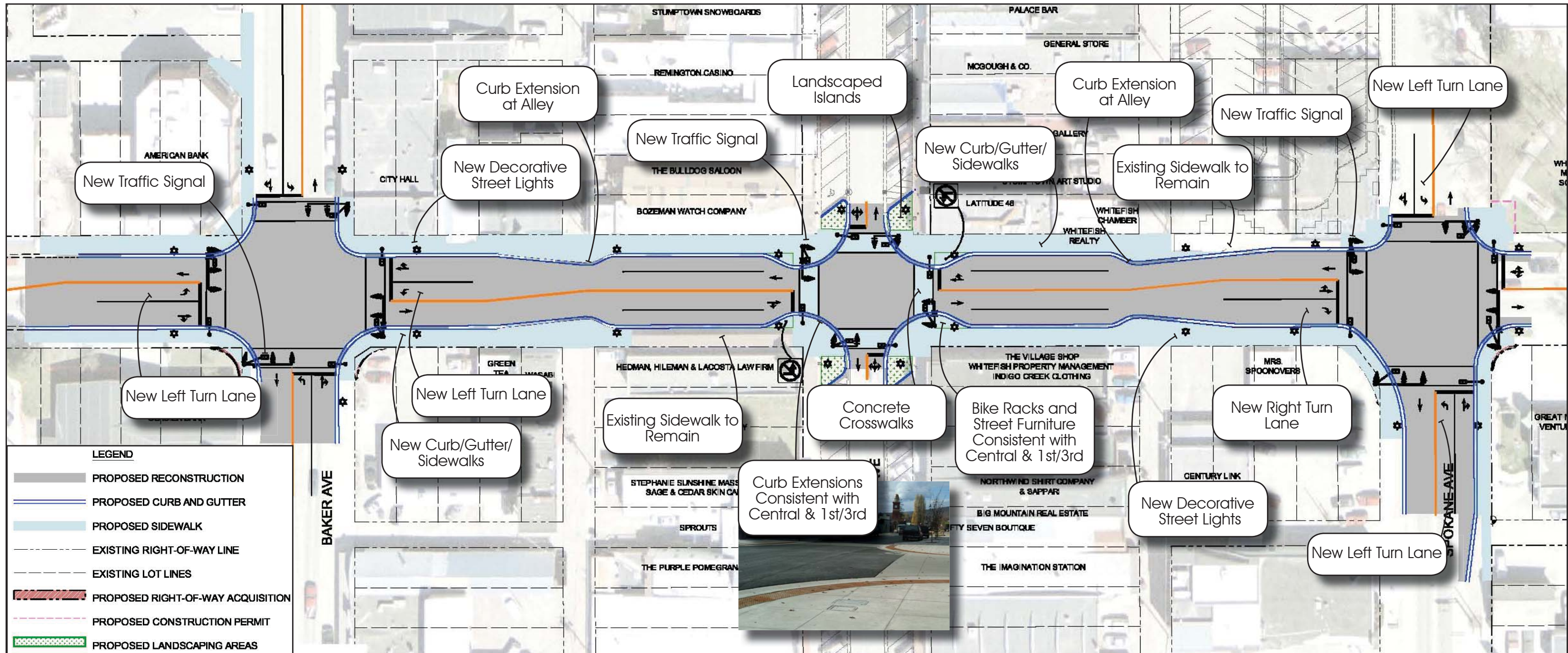
Tuesday, February 1st, 2011, 7:00 P.M.
City Council Chambers, 402 E. Second Street

An open house will begin at 7:00 P.M. with a brief presentation at 7:30 P.M., followed by a question and answer session. Designers will present the preliminary design and discuss how it fits into the Downtown Master Plan. The presentation will also feature a demonstration of the traffic simulation model and a discussion about construction phasing options.

Your Feedback Is Important!

Please plan to attend or schedule a meeting with the design team by calling Emily Brock at 406-728-4611.

Preliminary Design Overview



The design of the project is now approximately 30% complete. This defines the basic scope of the project, allows assessment of the environmental impacts, cost and right-of-way needs. Specific project details, like landscaping, decorative light poles, or construction phasing have not been defined yet. This allows us to seek input before important decisions are made.

Your comments are helpful!
A comment form is enclosed.

Contact Information

*To schedule a meeting with the design team contact Emily Brock at 406-728-4611

Jeremy Keene P.E.
 WGM Group, Project Design Consultant
 406-728-4611
 jkeene@wmggroup.com

Stephen Herzog
 CTA, Contract Administration Consultant
 406-257-8172 x 1510
 stephenh@ctagroup.com

Karin Hilding
 City of Whitefish, Senior Project Engineer
 406-863-2450
 khilding@cityofwhitefish.org

Dan Smith
 Federal Highway Administration, Recovery Coordinator
 (406) 441-3918
 dan.smith@dot.gov

