

**ADDENDUM NO. 2
MILLER CREEK ROAD IMPROVEMENTS
BRIGGS STREET TO MOCKINGBIRD WAY
February 5, 2010**

ADDENDUM ACKNOWLEDGEMENT

Bidders shall acknowledge receipt of this Addendum number and date on Page 00300-1 of the Bid Form. Failure to acknowledge this Addendum may be cause for rejection of the bid.

The following are amendments to the contract documents and plans for Miller Creek Road Improvements – Briggs Street to Mockingbird Way Project, Missoula, MT.

GENERAL PROJECT INFORMATION

WGM Group, Inc. is staking the approximate construction limits to be completed by the end of the day Friday February 5, 2010. to provide information for the tree removals. This staking will be flagged with blue and green ribbon. All trees within this corridor other than those shown on the plans to remain shall be removed. This information provides general information only, and shall NOT be considered part of the Contract Documents. Contractor may not rely upon or make any claim against Owner or Engineer for any interpretations or conclusions made from this information.

DIVISION 0 – BIDDING REQUIREMENTS, CONTRACT FORMS, AND CONDITIONS OF THE CONTRACT

SECTION 00300 – BID FORM

Bidder shall separate the new Section 00300 Bid Form (and appendices), attached as part of this addendum, and attach to the back of the existing Bid Form (yellow pages) within the Contract Manual and Submit with the Bid.

Summary of changes to Bid Form (referencing the attached Bid Form):

Bid Item # 29	- Change to Quantity
Bid Item # 34	- Change to Quantity
Bid Item # 35	- Eliminated (Bid Form has been renumbered)
Bid Item #100	- Added Bid Item

DIVISION 2 – SITE WORK

SECTION 02504 – ASPHALT SEAL COAT

PART 2: PRODUCTS

Add the following paragraph to section 2.1 – ASPHALT:

“B. CRS-2P Emulsified Asphalt meeting the requirements of MDT section 702 may be substituted for CRS-2 Emulsified Asphalt identified in section 02502; ASPHALT PRIME AND/OR TACK COAT.”

SECTION 02529 – CONCRETE SIDEWALKS, DRIVEWAYS, APPROACHES, CURB TURN FILLETS,
VALLEY GUTTERS, and MISCELLANEOUS NEW CONCRETE CONSTRUCTION

PART 2: PRODUCTS

Replace the following section:

“2.6 DETECTABLE WARNING SURFACES

- A. Furnish Detectable Warning Surfaces (DWS) at all new or repaired curb ramps throughout the project. Each DWS shall match the width and radius of the ramp, and extend 2 feet back behind the curb.
- B. Furnish DWS in all crosswalk median refuge locations throughout the project. Each DWS shall match the width of the crosswalk and extend 2 feet back behind the curb.
- C. Furnish DWS meeting City of Missoula STD Drawing 113 and comprised of one of the following approved materials throughout the project:
 - a. Precast concrete domes (Mutual Materials)
 - b. Reinforced composite domes (Macon Supply)
 - c. Cast iron domes (Hunton Precast)”

PART 3: EXECUTION

Add the following section:

“3.14 CONCRETE FOR APRONS

- A. Furnish Type II cork preformed expansion joint filler meeting AASHTO M213 requirements. Place expansion joints at all radius points and fixed points. Layout contraction joints to align with pattern and to avoid leaving thin areas of concrete. Color and pattern concrete in accordance with manufacturer’s recommendations. Apply release agent and sealer in accordance with manufacturer’s recommendations. Use color and pattern as outlined in section 02529 part 2.7.”

SECTION 02720 - STORM DRAIN SYSTEMS

PART 2: PRODUCTS

Add the following sections:

“2.6 PIPE GASKETS AT MANHOLE PENETRATIONS

- A. A water-tight gasket or stop ring is required for all manhole pipe penetrations, per City of Missoula standard details 301 and 602. Cast-in-place A-lok gaskets are acceptable. Also acceptable are water stop rings that are placed around the pipe at the point of manhole penetration and grouted into place within the manhole wall. The acceptable gasket for this use is a Romac Industries LCT manhole gasket or approved equal. For use on HDPE pipe with exterior corrugations, the Hancor Waterstop Gasket or approved equal is acceptable.

2.7 CURB INLET STRUCTURES

- A. All rim elevations indicated on the plans refer to the gutter flowline elevation of the inlet.”

PART 3: EXECUTION

Replace the following section:

“3.7 REMOVE DRAINAGE SUMP

- A. Existing sumps shall be removed including all concrete, brick and metal associated with the structure. The resulting hole shall be filled and compacted according to the standards in Section 02230 of this specification.”

PART 4: MEASUREMENT AND PAYMENT

Replace the following section:

“4.7 REMOVE DRAINAGE SUMP

- A. Measurement and payment shall be per each as listed in the bid proposal to "Remove Sump," and shall include all labor, equipment, materials, and incidentals to remove sumps per these specifications and local regulations.”

SECTION 02721 - IRRIGATION SYSTEM AND MISCELLANEOUS ITEMS

PART 3: EXECUTION

Add the following section:

“3.3 IRRIGATION DITCH W/ 24" DIA. HALF-ROUND CMP LINER

- A. Half-round pipe shall be made by cutting pipes meeting the specifications of Section 02720, Part 2.2 (A). The cut edge shall be de-burred and beveled to eliminate sharp edges.”

SECTION 02729 – STEP SEWER FORCE MAIN SEWER PRESSURE SERVICE

PART 3: EXECUTION

Add the following to section 3.1 INSTALLATION:

“F. Existing STEP Sewer Services Modification

- a. Contractor shall relocate curb boxes for existing STEP sewer services as indicated on the plans. Curb box locations will be determined in the field by the Engineer.
- b. Where existing service is a stub, and not in service, additional STEP service line shall be installed to extend the service as required to the new curb box or termination point as shown on the plans.

- c. Where existing service lines are in service, Contractor shall coordinate as necessary with landowners to allow temporary shut down on their sewer service to allow for relocating the curb box.”

PART 4: MEASUREMENT AND PAYMENT

Add the following to section:

“4.4 Existing STEP Sewer Services Modification

- A. Measurement and payment shall be per each for relocating curb boxes for existing STEP sewer services shall be at the unit price named in the proposal for each “Existing STEP Service Modification”. Payment shall be full compensation for all work associate with excavation, back fill, locating existing service line, making connection to existing line, relocating curb box, coordinating with landowner and all incidental work associated with this item.
- B. Measurement and payment for service line will be in accordance with section 4.3.”

SECTION 02900 – LANDSCAPING

PART 2: PRODUCTS

Add the following to paragraph 2.3.A – ROCK MULCH:

“This product is available at Woodring or Weaver pits in the Flathead Valley, or approved equal of similar color & texture.”

PART 3: EXECUTION

Add the following paragraph to section 3.3 PLANT CARE:

- “D. Manual watering devices, such as bladders or watering tubes are acceptable means of providing water during the warranty period. No additional payment will be made for such devices, if used. The Contractor may submit a Value Engineering proposal for an irrigation system if the system results in an equal or lesser overall cost to the project. Irrigation system design is the responsibility of the Contractor, and is subject to review and approval by the Owner.”

PLAN SHEETS

- A. The following changes will be made to the plan sheets. New plans will be issued to the Contractor, after award, labeled “Released for Construction” and will incorporate the following changes:

SHEET SW9 of SW10

On “Section A” replace reference to IFCO MH80 Ring and Cover with EJIW 1581Z, 2688E DI, and 3777C (to have City of Missoula custom logo and say “SANITARY SEWER”).

SHEET D2 of D12

On City of Missoula Standard Drawing 602, the grade adjustment rings shall have a rectangular opening with dimensions of 24" x 36". Cast Iron Ring and Cover shall be EJIW 7030

ADDED/REVISED PLAN SHEETS

- A. The following plan sheets have been revised to clarify irrigation details. New plan sets will be issued to the Contractor, after award, labeled "Released for Construction" and will incorporate the following changes:

REVISE – Delete plan sheet 26 in its entirety and replace with the revised plan sheet 26 (attached). No changes to this sheet directly affect the bid form, however do note that the stilling well has been changed from a 30" diameter structure to a structure based on a 48" diameter manhole section. The 1500-Gallon Sediment Tank shall meet or exceed Hunton Product No. 108, including dimensions and wall thickness, contact Dave Hunton at (406) 543-8640 for product information.

**SECTION 00300
BID FORM**

PROJECT IDENTIFICATION:

**Miller Creek Road Improvements – Briggs Street to Mockingbird Way
Missoula, Montana**

CONTRACT IDENTIFICATION AND NUMBER:

**Miller Creek Road Improvements – Briggs Street to Mockingbird Way
City Project Number: 05-033
Engineer’s Project Number: 07-04-20A**

THIS BID SUBMITTED TO:

**City of Missoula
City Clerk’s Office
435 Ryman Street
Missoula, MT 59802**

1.01 The undersigned Bidder proposes and agrees if this Bid is accepted, to enter into an Agreement with OWNER in the form included in the Bidding Documents, to perform and furnish all Work as specified or indicated in the Bidding Documents for the prices and within the times indicated in this Bid and in accordance with the other terms and conditions of the Bidding Documents.

2.01 Bidder accepts all of the terms and conditions of the Advertisement or Invitation to Bid, and Instruction to Bidders. This Bid will remain subject to acceptance for sixty (60) days after the Bid opening, or for such longer period of time that Bidder may agree to in writing upon request of OWNER.

3.01 In submitting this Bid, Bidder represents, as set forth in the Agreement, that:

- A. Bidder has examined and carefully studied the Bidding Documents, other related data identified in the Bidding Documents, and the following Addenda, receipt of all which is hereby acknowledged the following Addenda:

Addendum No.	Addendum Date
_____	_____
_____	_____
_____	_____

- B. Bidder has visited the Site and become familiar with and is satisfied as to the general, local, and Site conditions that may affect cost, progress, and performance of the Work.
- C. Bidder is familiar with and is satisfied as to all federal, state, and local Laws and Regulations that may affect cost, progress, and performance of the Work.
- D. Bidder has carefully studied all (1) reports of explorations and tests of subsurface conditions at or contiguous to the Site and all drawings of physical conditions in or relating to existing surface or subsurface structures at or contiguous to the Site (except Underground Facilities) which have been identified in the Special Provisions as provided in Paragraph 4.02 of the General Conditions, and (2) reports and drawings of a Hazard Environmental Condition, if any, which has been identified in the Special Provisions as provided in Paragraph 4.06 of the General Conditions.

- E. Bidder has obtained and carefully studied (or assumes responsibility for having done so) all additional or supplementary examinations, investigations, explorations, tests, studies and data concerning conditions (surface, subsurface and Underground Facilities) at or contiguous to the Site which may affect cost, progress, or performance of the Work or which relate to any aspect of the means, methods, techniques, sequences, and procedures of construction expressly required by the Bidding Documents to be employed by Bidder, and safety precautions and programs incident thereto.
- F. Bidder does not consider that any further examinations, investigations, explorations, tests, studies or data are necessary for the determination of this Bid for performance of the Work at the price(s) bid and within the times and in accordance with the other terms and conditions of the Bidding Documents.
- G. Bidder is aware of the general nature of the Work to be performed by OWNER and others at the Site that relates to the Work as indicated in the Bidding Documents.
- H. Bidder has correlated the information known to Bidder, information and observations obtained from visits to the Site, reports and drawings identified in the Bidding Documents, and all additional examinations, investigations, explorations, tests, studies, and data with the Bidding Documents.
- I. Bidder has given ENGINEER written notice of all conflicts, errors, ambiguities, or discrepancies that Bidder has discovered in the Bidding Documents and the written resolution thereof by ENGINEER is acceptable to Bidder.
- J. The Bidding Documents are generally sufficient to indicate and convey understanding of all terms and conditions for the performance of the Work for which this Bid is submitted.

4.01 Bidder further represents that this Bid is genuine and not made in the interest of or on behalf of any undisclosed individual or entity and is not submitted in conformity with any agreement or rules of any group, association, organization or corporation; Bidder has not directly or indirectly induced or solicited any other Bidder to submit a false or sham Bid; Bidder has not solicited or induced any person, firm or corporation to refrain from bidding; and Bidder has not sought by collusion to obtain for itself any advantage over any other Bidder or over OWNER.

The BIDDER certifies that no official of the OWNER, ENGINEER, or any member of such official's immediate family, has direct or indirect interest in the pecuniary profits or Contracts of the BIDDER.

5.01 The Bidder will complete the Work in accordance with the Contract Documents for the following price(s): (**NOTE: 1% Montana Gross Receipts Tax shall be included in Unit Prices**)

UNIT BID PRICE SCHEDULE (ADDENDUM 2)

Item Number	Description	Qty	Unit	Unit Price	Total
1	MOBILIZATION/DEMOBILIZATION	1	LS		
2	PERMITS	1	LS		
3	EROSION CONTROL	1	LS		
4	MISCELLANEOUS WORK	100,000	EACH	\$1.00	\$100,000.00
5	TRAFFIC CONTROL	1	LS		

Item Number	Description	Qty	Unit	Unit Price	Total
6	EXCAVATION ABOVE SUBGRADE	15,043	CY		
7	8" THICKNESS OF 2" MINUS CRUSHED SUB BASE COURSE	12,537	SY		
8	9" THICKNESS OF 2" MINUS CRUSHED SUB BASE COURSE	4,154	SY		
9	4" THICKNESS OF 3/4" MINUS CRUSHED BASE COURSE	18,512	SY		
10	2" THICKNESS OF ASPHALT CONCRETE SURFACE COURSE, GRADE B	1,533	SY		
11	4" THICKNESS OF ASPHALT CONCRETE SURFACE COURSE, GRADE B	16,382	SY		
12	CRS-2 ASPHALT SEAL AND CHIP COAT, 3/8" GRADATION	16,382	SY		
13	COMBINED CONCRETE CURB AND GUTTER	6,870	LF		
14	CONCRETE MEDIAN CURB	770	LF		
15	9" THICKNESS TRAVERSABLE CONCRETE MEDIAN APRON	3,783	SF		
16	4" THICKNESS PATTERNED CONCRETE MEDIAN CAP	2,588	SF		
17	4" THICKNESS CONCRETE SIDEWALK	29,580	SF		
18	6" THICKNESS CONCRETE SIDEWALK	2,537	SF		
19	6" THICKNESS CONCRETE DRIVEWAY/APRON	6,635	SF		
20	DETECTABLE WARNING SURFACES	272	SF		
21	PRECAST GRAVITY RETAINING WALL	1,935	SF		
22	REMOVE DRAINAGE SUMP	3	EACH		
23	4' DIAMETER STORM DRAINAGE SUMP	1	EACH		
24	EXTEND 30" X 48" RCP CULVERT	40	LF		
25	EXTEND 30" X 48" CMP CULVERT	103	LF		
26	12" HDPE STORM DRAIN PIPE	2,036	LF		
27	18" HDPE STORM DRAIN PIPE	1,009	LF		
28	6' DIAMETER STORM DRAIN MANHOLE	1	EA		
29	4' DIAMETER STORM DRAIN MH AND INLET	23	EACH		
30	30" DIA. STORM DRAIN INLET	2	EACH		
31	CONNECT TO EXISTING 54" DIAMETER STORM DRAIN	1	LS		
32	CONSTRUCT UNLINED IRRIGATION DITCH	50	LF		
33	CONSTRUCT IRRIGATION DITCH W/ 24" DIA. HALF-ROUND CMP LINER	60	LF		
34	24" EQUIVALENT REINFORCED CONCRETE ARCH PIPE	375	LF		
35	18" REINFORCED CONCRETE IRRIGATION PIPE	104	LF		

Item Number	Description	Qty	Unit	Unit Price	Total
36	1500 GALLON IRRIGATION SETTLING TANK	1	EACH		
37	IRRIGATION DIVISION STRUCTURE ONE	1	EACH		
38	IRRIGATION DIVISION STRUCTURE TWO	1	EACH		
39	IRRIGATION STILLING WELL	1	EACH		
40	IRRIGATION SERVICE	1	EACH		
41	IRRIGATION SLEEVE	75	LF		
42	MODIFY & RESTORE IRRIGATION SYSTEM	5	EACH		
43	14" SDR 26 PVC FORCE MAIN	114	LF		
44	12" SDR 26 PVC FORCE MAIN	2,887	LF		
45	8" SDR 26 PVC FORCE MAIN	2,893	LF		
46	6" SDR 26 PVC FORCE MAIN	119	LF		
47	CONNECT TO EXISTING 6" AND 14" FORCE MAIN	1	LS		
48	SEWER FORCE MAIN MANIFOLD AND VALVE ASSEMBLY	1	LS		
49	SEWER FORCE MAIN AIR/VACUUM RELEASE VAULT ASSEMBLY & INSTALL	1	LS		
50	6" STEP FORCE MAIN CONNECTION TO EXISTING MAIN	1	LS		
51	6" SDR 21 PVC STEP SEWER FORCE MAIN	361	LF		
52	6" STEP FORCE MAIN CLEANOUT ASSEMBLY	1	LS		
53	2" STEP FORCE MAIN CLEANOUT ASSEMBLY	1	LS		
54	STEP FORCE MAIN AIR RELEASE/VACUUM VALVE ASSEMBLY	3	EACH		
55	2" STEP FORCE MAIN CONNECTION TO EXISTING MAIN	1	LS		
56	2" 200# PE STEP FORCE MAIN	37	LF		
57	1" 200# PE STEP SEWER SERVICE CONNECTION	20	EACH		
58	1" 200# PE STEP SEWER SERVICE	859	LF		
59	2" 200# PE STEP SEWER SERVICE CONNECTION	1	EACH		
60	2" 200# PE STEP SEWER SERVICE	70	LF		
61	ADJUST EXISTING SEWER CLEANOUTS OR VALVE BOXES	10	EACH		
62	FLOWABLE FILL PIPE ENCASMENT	25	LF		
63	TRENCH INSULATION	110	LF		
64	DRY UTILITY TRENCH	1,851	LF		
65	ADJUST UTILITY STRUCTURE ACCESS TO GRADE	4	EACH		
66	PAVEMENT MARKINGS PAINT	126	GAL		
67	PAVEMENT MARKINGS EPOXY	84	GAL		

Item Number	Description	Qty	Unit	Unit Price	Total
68	WORDS AND SYMBOLS PAINT	6	GAL		
69	WORDS AND SYMBOLS EPOXY	8	GAL		
70	CURB MARKING - EPOXY	12	GAL		
71	REMOVE SIGNS	12	EACH		
72	NEW SIGN (GROUND MOUNT)	44	EACH		
73	WARNING DELINEATORS	15	EACH		
74	FOUNDATION - CONCRETE	4.75	CY		
75	CONDUIT - STEEL 1 1/2 IN RIGID	70	LF		
76	CONDUIT - STEEL 2 IN RIGID	15	LF		
77	CONDUIT - PLASTIC 1 1/2 IN	1,353	LF		
78	CONDUIT - PLASTIC 2 IN	190	LF		
79	PULL BOX - CONCRETE TYPE 1	4	EACH		
80	CONDUCTOR - COPPER AWG10-600V	3,700	LF		
81	STANDARD - STL TYPE 10-A-500-6	9	EACH		
82	LUMINAIRE ASSEMBLY - 150 W S.V.	9	EACH		
83	SERVICE ASSEMBLY - 30 AMP	1	EACH		
84	2.5" CALIPER DECIDUOUS TREE	89	EACH		
85	8' HGT. CONIFER TREE	7	EACH		
86	5 GALLON SHRUB	42	EACH		
87	1 GALLON PERENNIAL	55	EACH		
88	¾" ROCK MULCH - 2 1/4" DEPTH	2,124	SF		
89	WEED BARRIER FABRIC	2,124	SF		
90	4" TOPSOIL & SEEDING	10,394	SY		
91	TRIM TREE	4	EACH		
92	EROSION CONTROL BLANKET	425	SY		
93	EXISTING MAILBOXES TO BE RELOCATED	15	EACH		
94	REMOVE FENCE	2,925	LF		
95	RESET FENCE	373	LF		
96	TEMP. FARM FENCE	3,110	LF		
97	WOOD RAIL FENCE	175	LF		
98	TEMP CONSTRUCTION FENCE	1,140	LF		
99	METAL GATE	3	EACH		
100	EXISTING STEP SERVICE MODIFICATION	7	EACH		

TOTAL COMBINED BID PRICE \$ _____
(Figures)

TOTAL COMBINED BID PRICE \$ _____
(Words)

CONTRACT TIME = 180 CALENDAR DAYS

- A. Unit Prices have been computed in accordance with Paragraph 11.03.B. of the General Conditions.
- B. Bidder acknowledges that estimated quantities are not guaranteed, and are solely for the purpose of comparison of Bids, and final payment for all Unit Price Bid items will be based on actual quantities provided, determined as provided in the Contract Documents.
- C. The undersigned agrees that the unit prices shall govern in checking the Bid, and should a discrepancy exist in the Total Estimated Price and Total Amount of Unit Prices Bid as listed above after extensions are checked and corrections made, if any, the Total Amount of Unit Prices Bid as corrected shall be used in awarding this Contract.
- D. Determination of lowest responsive Bidder will be based on the sum total of the Total Combined Bid Price.
- E. The OWNER reserves the right to reject any or all bids.

6.01 Bidder agrees that the Work will be substantially completed and ready for final payment in accordance with 14.07 of the General Conditions on or before the dates or within the number of calendar days indicated in the Agreement (Section 00500).

6.02 Bidder accepts the provisions of the Agreement as to liquidated damages in the event of failure to complete the Work within the times specified above, which shall be stated in the Agreement.

7.01 The following documents are attached to and made a condition of the Bid:

- A. Required Bid security in the amount of 10% of the maximum Bid price including alternates, if any, and in the form of a Bid Bond identified in the Instructions to Bidders.
- B. Information Required of Bidder – General Information (form attached).

8.01 The terms used in this Bid with the initial capital letters have the meanings indicated in the Instructions to Bidders, General Conditions, and the Supplementary Conditions.

SUBMITTED on _____

Montana Contractor's Registration # _____

Employer's Tax ID No. _____

If BIDDER is:

An Individual: _____
(Name typed or printed)

By: _____(SEAL)
(Individual's Signature)

Doing business as: _____

Business Address: _____

Phone No.: _____ FAX No: _____

A Partnership: _____
(Partnership Name)

By: _____(SEAL)
(Signature)

(Name, typed or printed)

Business Address: _____

Phone No.: _____ FAX No: _____

A Corporation: _____(SEAL)
(Corporation Name)

State of Incorporation: _____

Type (General Business, Professional, Service, Limited Liability): _____

By: _____
(Signature of person authorized to sign)

Title: _____

Attest: _____(CORPORATE SEAL)
(Signature of Secretary)

Business Address: _____

Phone No.: _____ FAX No: _____

Date of Qualification To Do Business Is: _____

A Joint Venture: Each Joint Venture Must Sign

Joint Venturer Name: _____ (SEAL)
(Name)

By: _____
(Signature of Joint Venture Partner)

Name: _____
(Name, printed or typed)

Title: _____

Business Address: _____

Phone No.: _____ FAX No: _____

A Joint Venture: Each Joint Venture Must Sign

Joint Venturer Name: _____ (SEAL)
(Name)

By: _____
(Signature of Joint Venture Partner)

Name: _____
(Name, printed or typed)

Title: _____

Business Address: _____

Phone No.: _____ FAX No: _____

Address of Joint Venture for Receipt of Official Communication:
Address: _____

Phone No.: _____ FAX No: _____

(Each Joint Venture must sign. The manner of signing for each individual, partnership, and corporation that is a party to the joint venture should be in the manner indicated above.)

BID FORM
INFORMATION REQUIRED OF BIDDER
GENERAL INFORMATION

The bidder shall furnish the following information. Failure to comply with this requirement will render the Bid non-responsive and may cause its rejection. Additional sheets shall be attached as required.

(1) Contractor's name and address:

(2) Contractor's telephone number: _____

(3) Contractor's license: Primary classification _____

State License No. _____

Supplemental classifications held, if any: _____

(4) Number of years as a contractor in construction work of this type: _____

(5) Names and titles of all officers of Contractor's firm, responsible for this project:

(6) Name of person who inspected site of proposed work for your firm:

Name: _____

Date of inspection: _____

(7) Name, address and telephone number of surety company and agent who will provide the required bonds on this contract:

(8) A financial statement, or AIA Document A305 Contractor's Qualification Statement, references, and other information, sufficiently comprehensive to permit an appraisal of Contractor's current financial condition, can be requested by the Owner or Engineer, and must be provided by the Contractor upon request.

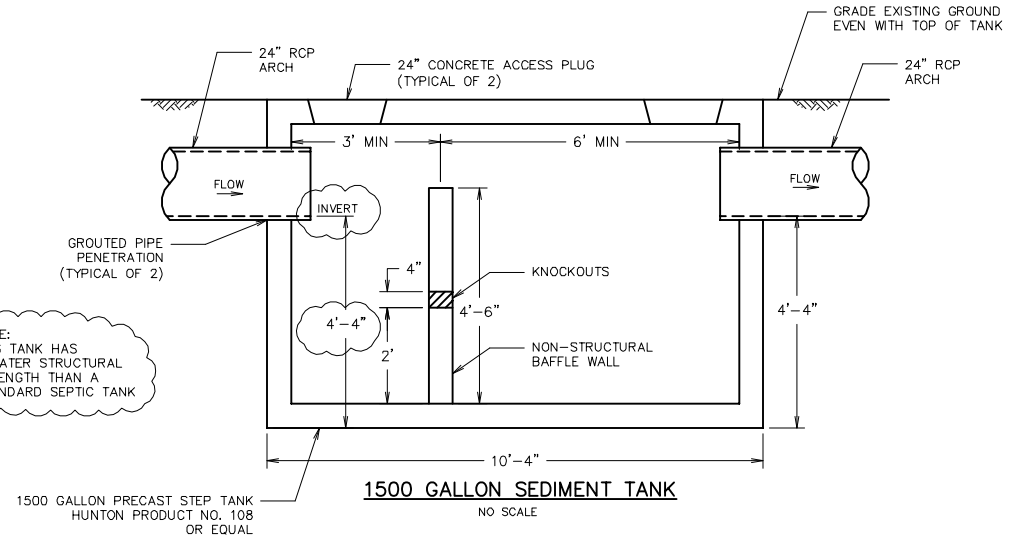
END OF SECTION 00300

IRRIGATION DETAILS
MILLER CREEK ROAD IMPROVEMENTS
MISSOULA, MT

NO.	DESCRIPTION	DATE
1	REVISED PER ADDENDUM 2	2-5-10

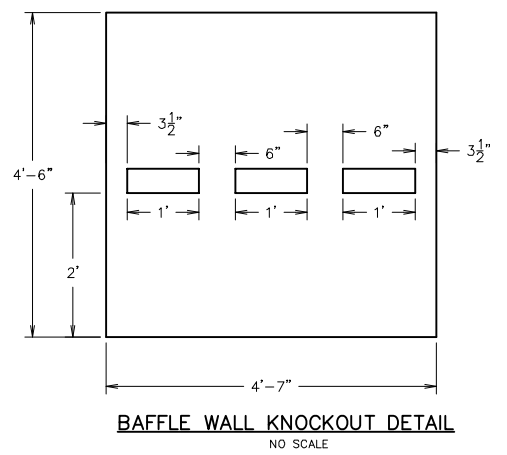
PROJECT: 07-04-20A
FILE No: 070420A Irrig-det.dwg
FILE PATH
W:\Projects\070420A\CAD Data - 070420A\Design
LAYOUT: IRR-DETAILS 3
SURVEYED: ---
DESIGN: JG
DRAFT: BEA/TI
APPROVE: JWK
DATE:

JANUARY 17, 2010

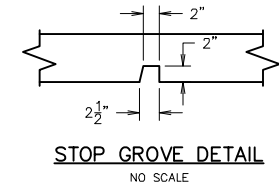


NOTE:
THIS TANK HAS
GREATER STRUCTURAL
STRENGTH THAN A
STANDARD SEPTIC TANK

1500 GALLON PRECAST STEP TANK
HUNTON PRODUCT NO. 108
OR EQUAL
1500 GALLON SEDIMENT TANK
NO SCALE

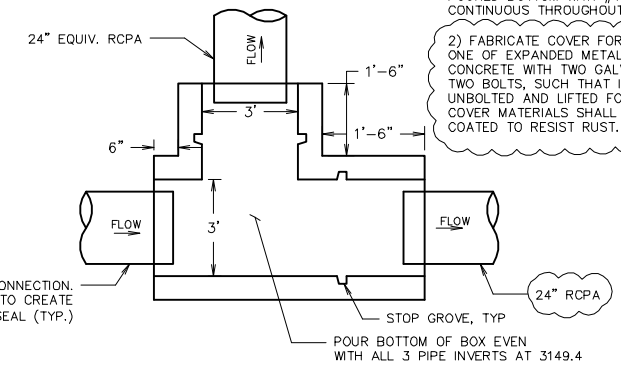


BAFFLE WALL KNOCKOUT DETAIL
NO SCALE

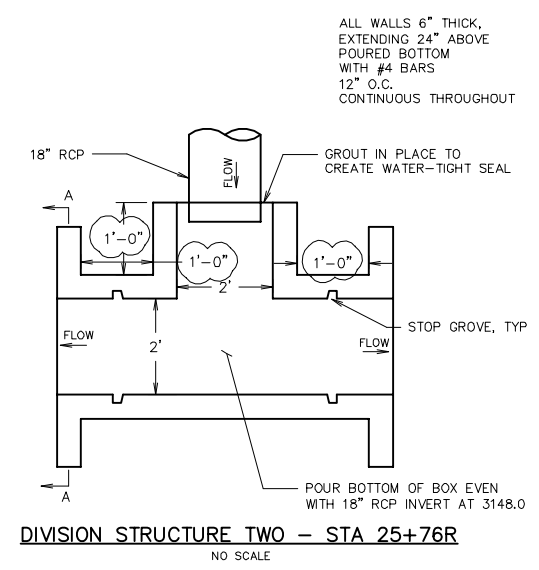


STOP GROVE DETAIL
NO SCALE

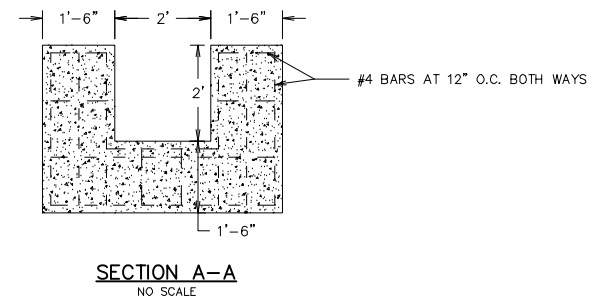
- NOTES:
- 1) ALL WALLS 6" THICK, EXTENDING 24" ABOVE
POURED BOTTOM WITH #4 BARS 12" O.C.
CONTINUOUS THROUGHOUT.
 - 2) FABRICATE COVER FOR DIVISION STRUCTURE
ONE OF EXPANDED METAL GRATE. AFFIX TO
CONCRETE WITH TWO GALVANIZED HINGES AND
TWO BOLTS, SUCH THAT IT CAN BE EASILY
UNBOLTED AND LIFTED FOR MAINTENANCE. ALL
COVER MATERIALS SHALL BE TREATED OR
COATED TO RESIST RUST.



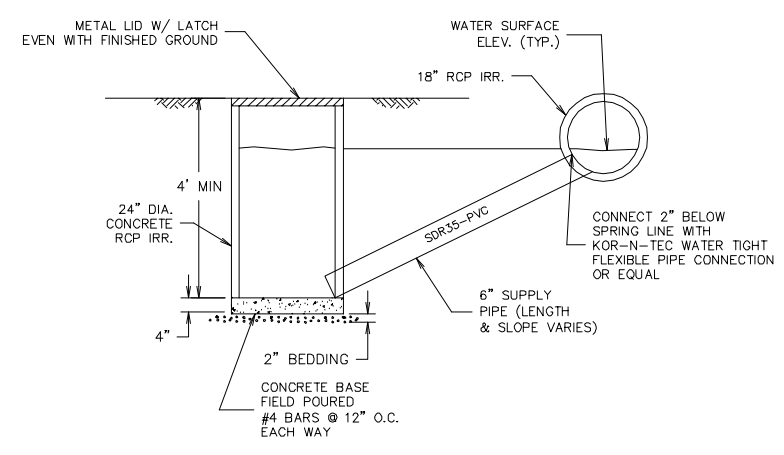
DIVISION STRUCTURE ONE - STA 15+85L
NO SCALE



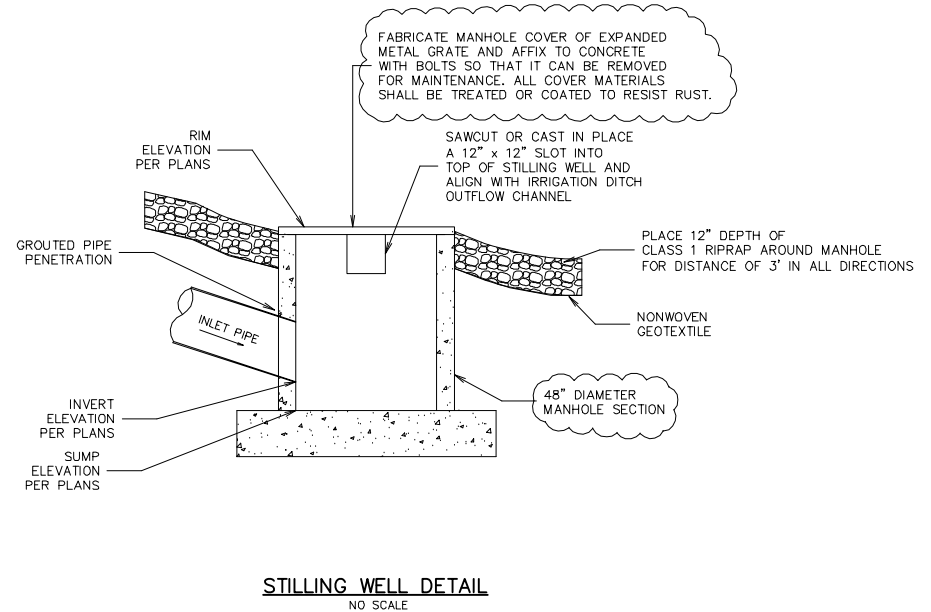
DIVISION STRUCTURE TWO - STA 25+76R
NO SCALE



SECTION A-A
NO SCALE



TYPICAL IRRIGATION SERVICE
NO SCALE



STILLING WELL DETAIL
NO SCALE